

INTERSTATES 35, 35E AND 35W - TEXAS

Texas Department of Transportation Waco District Interstate Asset Maintenance

DBi Services provides comprehensive management, operations, and asset maintenance of all roadway and roadside for Interstate 35, Interstate 35E and Interstate 35W in the Waco District for TxDOT.

This project is comprised of interstate highways and frontage roads and consists of approximately 115 center-line miles ranging from four lanes to sixteen in cross-section of Bell, McLennan and Hill Counties in Central Texas. Frontage road project responsibilities include inspection and maintenance of signalized intersections.

DBi Services is responsible for all incident response, emergency management and traffic control of the entire corridor.

DBi Services has maintained this project since 2010. The contract will continue until 2015 with a renewal option.

Project Highlights

This project is a vital connection for commerce linking Mexico, the United States and Canada. Traffic volumes and truck traffic are extremely high. Because of these demands, much of the corridor is or has been under construction to increase capacity, requiring a high degree of coordination with construction contractors to maintain vital services to the travelling public.

DBi Services is responsible for 24/7/365 accident and emergency response throughout the project corridor requiring coordination of resources with multiple police and emergency response agencies.

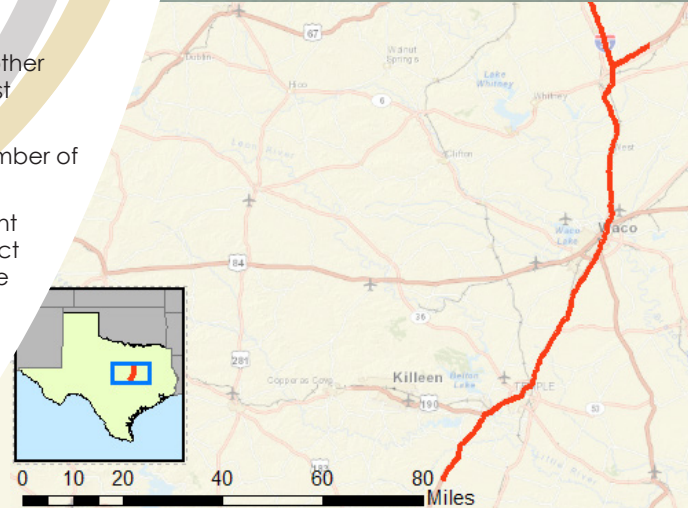
Waco is home to Baylor University. Events at the University such as football games increase usage of the Interstate and require DBi Services to increase its level of service to accommodate the increase in traffic and demands on the highway system.

Relevant Experience Gained

- Maintenance of signalized intersections requires DBi Services to respond within two hours or less to a signal outage or malfunction.
- Roadside parks are also included in this project. These areas are inspected and serviced weekly to provide a safe and pleasant place for travellers to stop during their trip.
- DBi Services is also responsible for winter operations on this project providing spreader trucks, liquid anti-icing trucks and loaders in response to snow and ice events.

Value to Customer

- Sharing of innovations on this project and on projects in other states and Canada allows this project to benefit from best practices and lessons learned on other projects.
- Bundled operations and maintenance minimizing the number of contractors and streamlining the oversight needed.
- Providing the majority of the work with in-house equipment and staff allows DBi Services to respond swiftly to all project needs, including unplanned repairs to aging infrastructure that is not yet reconstructed.



WORLD HEADQUARTERS:

100 North Conahan Drive . Hazleton PA 18201-7355 USA | +1 570 459 1112 . Toll Free 800 360 9333 | info@dbiservices.com